

anses
French agency for food, environmental
and occupational health & safety



Laboratory for Food Safety
Maisons-Alfort location



EURL Lm

European Union Reference Laboratory for
Listeria monocytogenes
<http://eurl-listeria.anses.fr>

Overview of
training sessions organized on
Listeria monocytogenes typing activities
2014 – 2015
Jean-François MARIET, SEL Unit

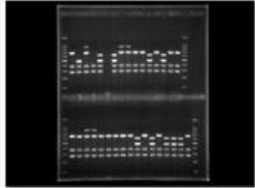
French Agency for Food, Environmental and Occupational Health Safety – Food Safety Laboratory
Maisons-Alfort location and Boulogne-sur-Mer location
14, rue Pierre et Marie Curie - F94701 Maisons-Alfort Cedex - Telephone: + 33 149 771 350 - Fax: + 33 149 771 380
Boulevard du Bassin Napoléon - F62200 Boulogne-sur-Mer - Téléphone : +33 321 992 500 – Télécopie : + 33 321 991 725
www.anses.fr - @Anses_fr

EURL typing activities: web-site

Published on 26/05/2014

<https://eurl-listeria.anses.fr/en/minisite/listeria/european-union-reference-laboratory-listeria-monocytogenes-0>

Characterisation

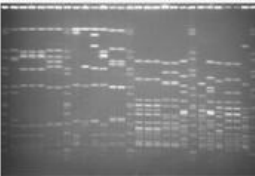


Serotyping

pdf - molecular serotyping : **Introductive note of the 2 in-house methods, determination of the serogroup and amplification of the gene FlaA**

pdf - conventional serotyping (soon)

Updated November 2014



Pulsed Field Gel Electrophoresis

pdf - **method**

youtube - video tutorials: **extraction** and **restriction**

Updated November 2014



EURL Lm database

http - <https://moleculartyping-db.anses.fr/eulisnet/>

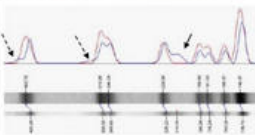
youtube - **Video tutorials**

Updated November 2014



Training sessions

A training course dedicated to PFGE typing is planned (2-4 December 2014)



Typing proficiency testing trials

pdf (restricted area) - Report **2012 - 2010 - 2009**

2014 - the panel being sent during the week 41 2014 (6th to 10th of October 2014)



Scientific communication (soon)

fAFLP/PFGE

MLVA/PFGE

PFGE protocol

Rep-PCR/PFGE

EURL database

PT trial 2009-2010

PT trial 2012

PFGE interpretation method

Bio informatic tools

➔ **Protocols and video tutorials**

➔ **EURL database**

➔ **Training sessions**

➔ **Proficiency testing trials**

➔ **Publications**

Web training session

On-line web meetings were organized in 2014 and 2015

By: Benjamin Felix, Damien Michelin

Through Lync

1) Remote demonstration

2) On-line help

2014

SCOM members	Time (h)
DK-NRL	3
SE-NRL	3
Total	6

2015

SCOM members	Time (h)
IE-NRL	2
Total	2

Do not hesitate to contact us !

On-site training

Two on-site training sessions for database management

- Management of epidemiological information
- Set-up of molecular database

Teramo, 15-16 April 2014: IT & DE NRLs

Ljubiana, 26-28 May 2014: SI & HR NRLs



NRL visits

Visit of the Danish NRL, Copenhagen

Jean-François Mariet, Damien Michelon, 25 – 27 November 2014

- Visit of the laboratory
- Scientific discussion
- Database demonstration

Visit of the Swedish NRL, Upsalla

Benjamin Felix, 3 February 2015

- Visit of the laboratory
- Scientific discussion



Technical & scientific assistance to NRLs

Over 2014 -2015

Benjamin Felix, Damien Michelon, Jean François Mariet

- **BioNumerics (2) and database management (2):**
- **PFGE typing (11), shipment of plugs/strains (2)**
- **PCR serotyping (7), reference strains shipment (5)**
- **Other methods (e.g. MLST (1))**

(n=) : number of requests



Training session (Anses lab, 2 – 4 November 2014)

- Three-day training session at EURL *Lm*, theoretical and practical training for EE, IT, MK, NL, PL NRLs
- Training program defined “on demand” of the participants
- Specific focus on PFGE profile analysis using BioNumerics



Training session (Anses lab, 16 – 20 March 2015)

- Five-day training session at EURL *Lm*, curation training session for EURL *E.coli* and EURL *Salmonella*
- Curator habilitation program, SOPs V2 draft



EXTERNAL SCIENTIFIC REPORT

Molecular typing of *Listeria monocytogenes* strains isolated from food, feed and animals: state of play and standard operating procedures for pulsed field gel electrophoresis (PFGE) typing, profile interpretation and curation¹

Sophie Roussel, Damien Michelon, Bertrand Lombard, Renaud Lailler

University Paris-Est, ANSES, Laboratory for Food Safety, European Union Reference Laboratory for *Listeria monocytogenes*, 94706 Maisons-Alfort, France (Sophie.Roussel@anses.fr, Damien.Michelon@anses.fr, Bertrand.Lombard@anses.fr, Renaud.Lailler@anses.fr)



2015 training sessions

- **Training session at EURL Lm (6 persons), October-December 2015**
- **Two on-site training sessions, to be organized in 2nd semester of 2015**
- **Web meeting are possible on all topics “upon request”**

Contact us !