



IZSAM G.CAPORALE
TERAMO

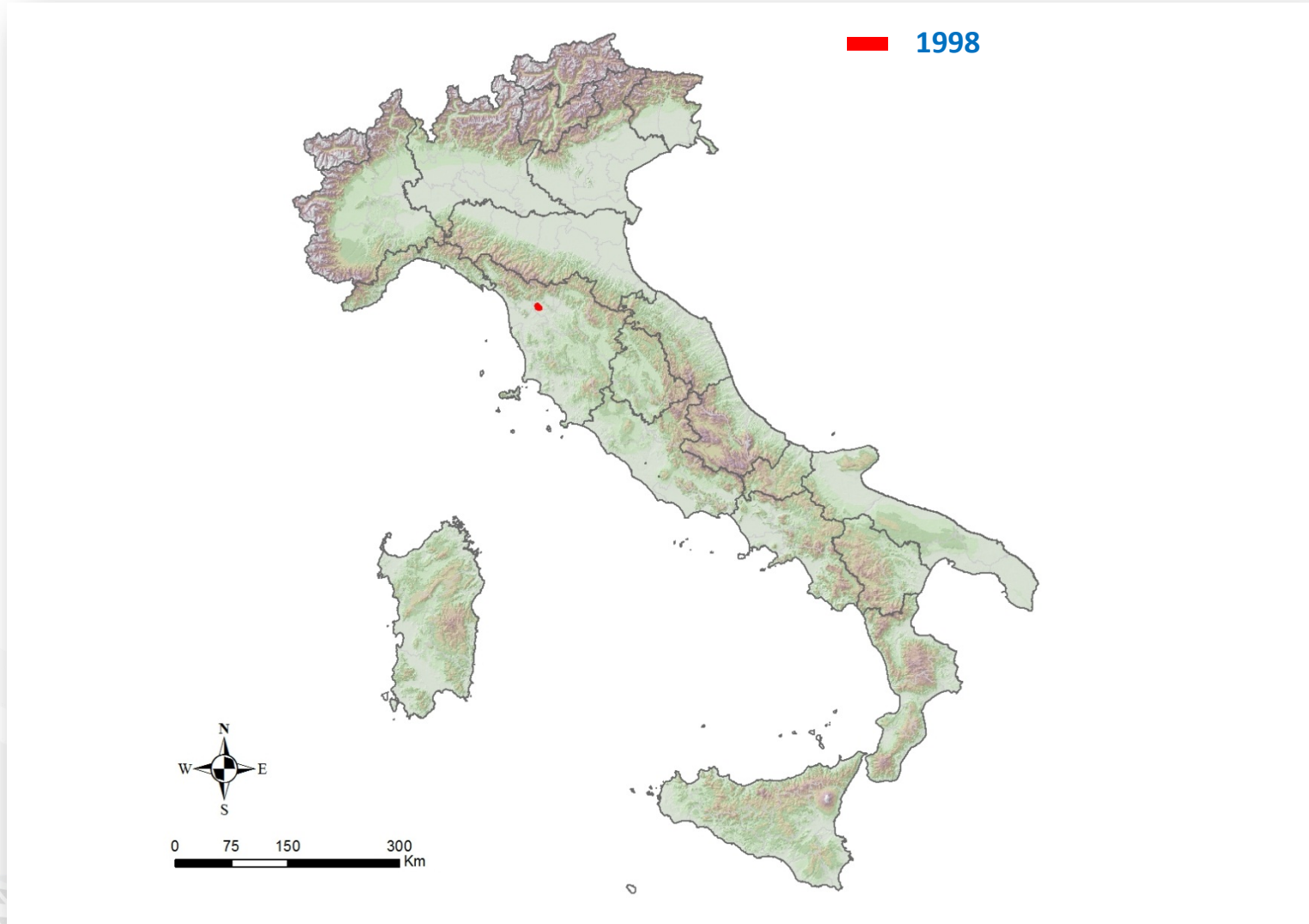
Sorveglianza della WNV in ambito veterinario

Paolo Calistri

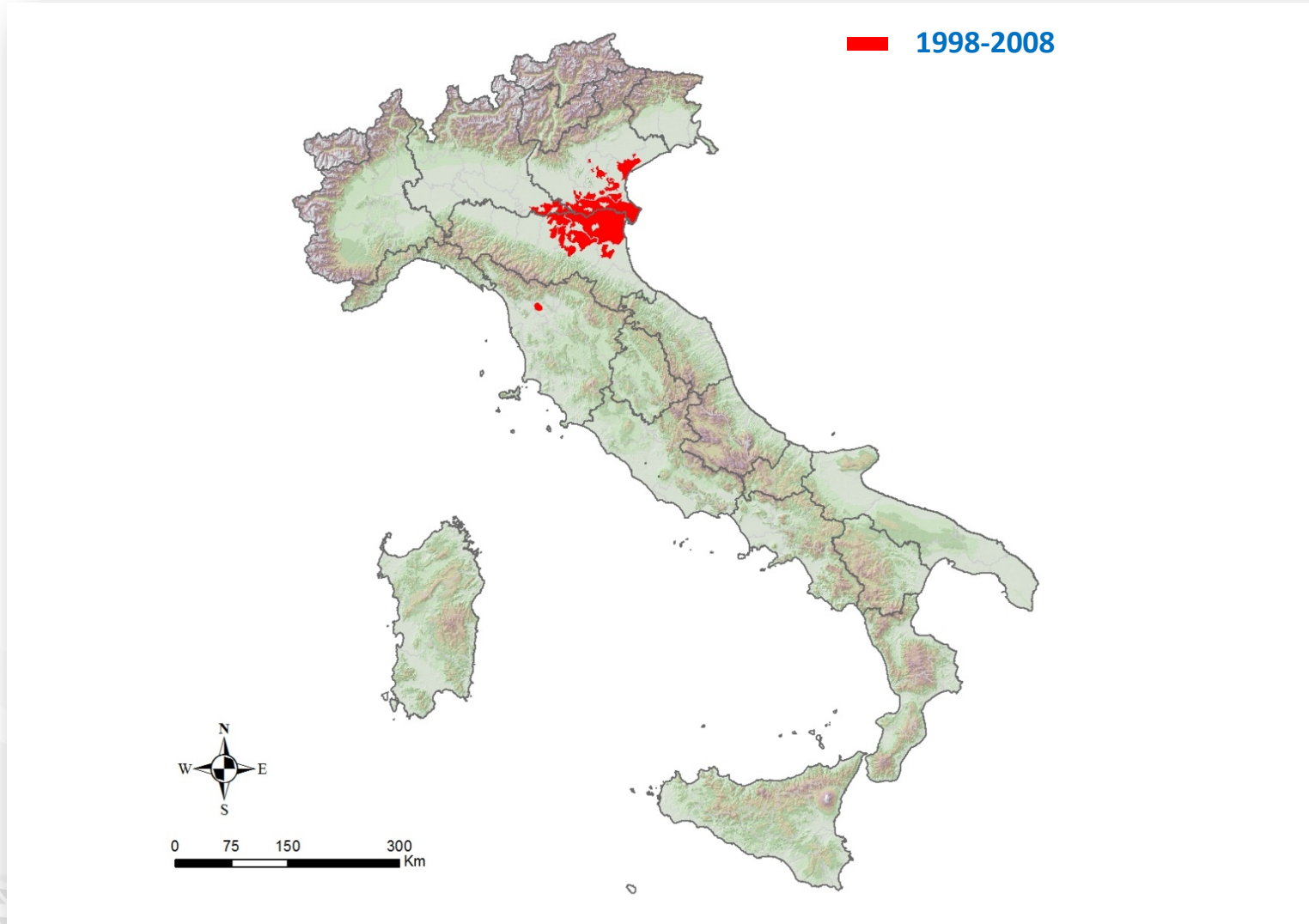
**Centro Operativo Veterinario per l'Epidemiologia, Programmazione, Informazione e Analisi del Rischio
Istituto Zooprofilattico Sperimentale dell'Abruzzo e del Molise "G. Caporale", Teramo, Italy**



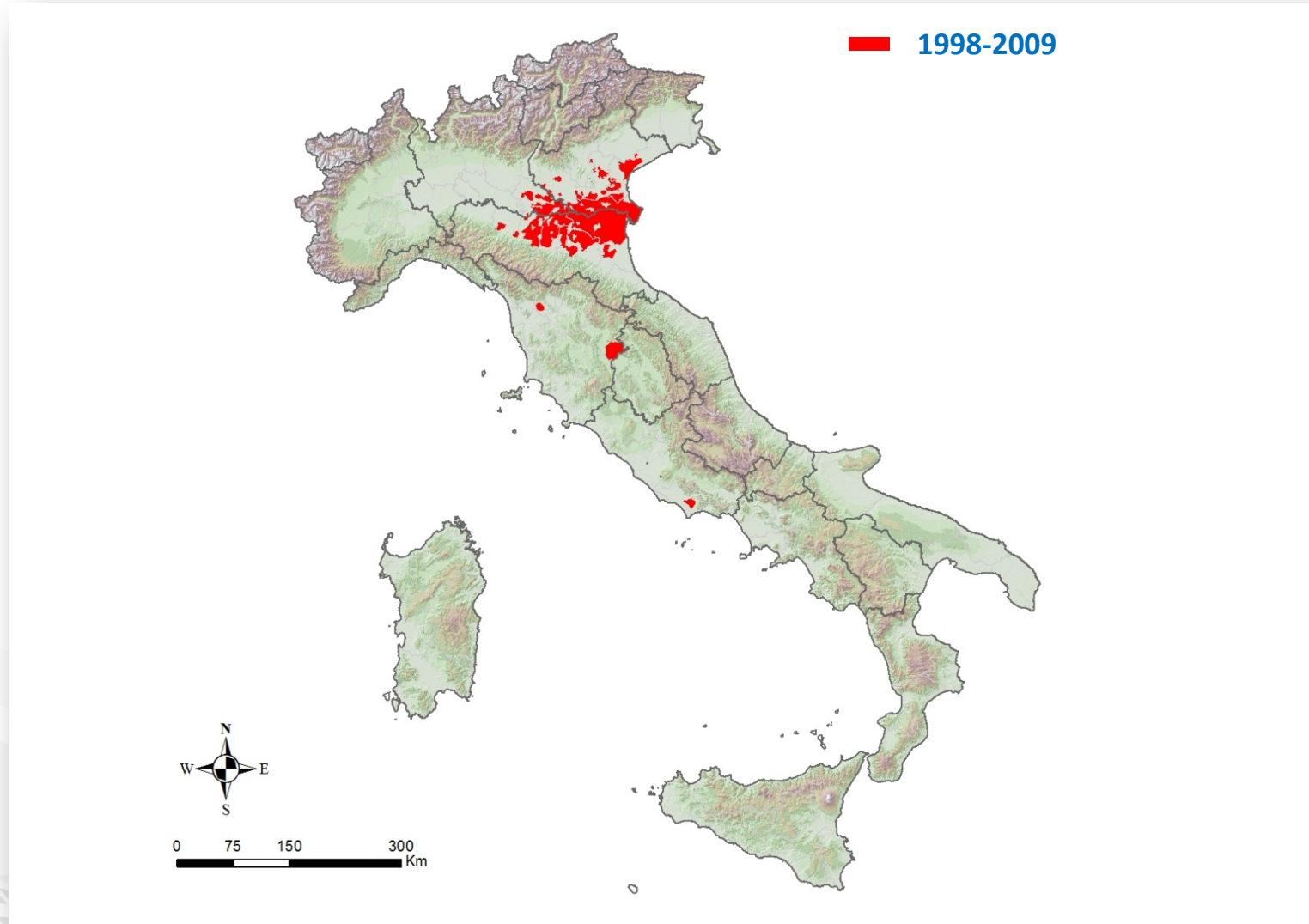
Circolazione WNV in Italia 1998 - 2014



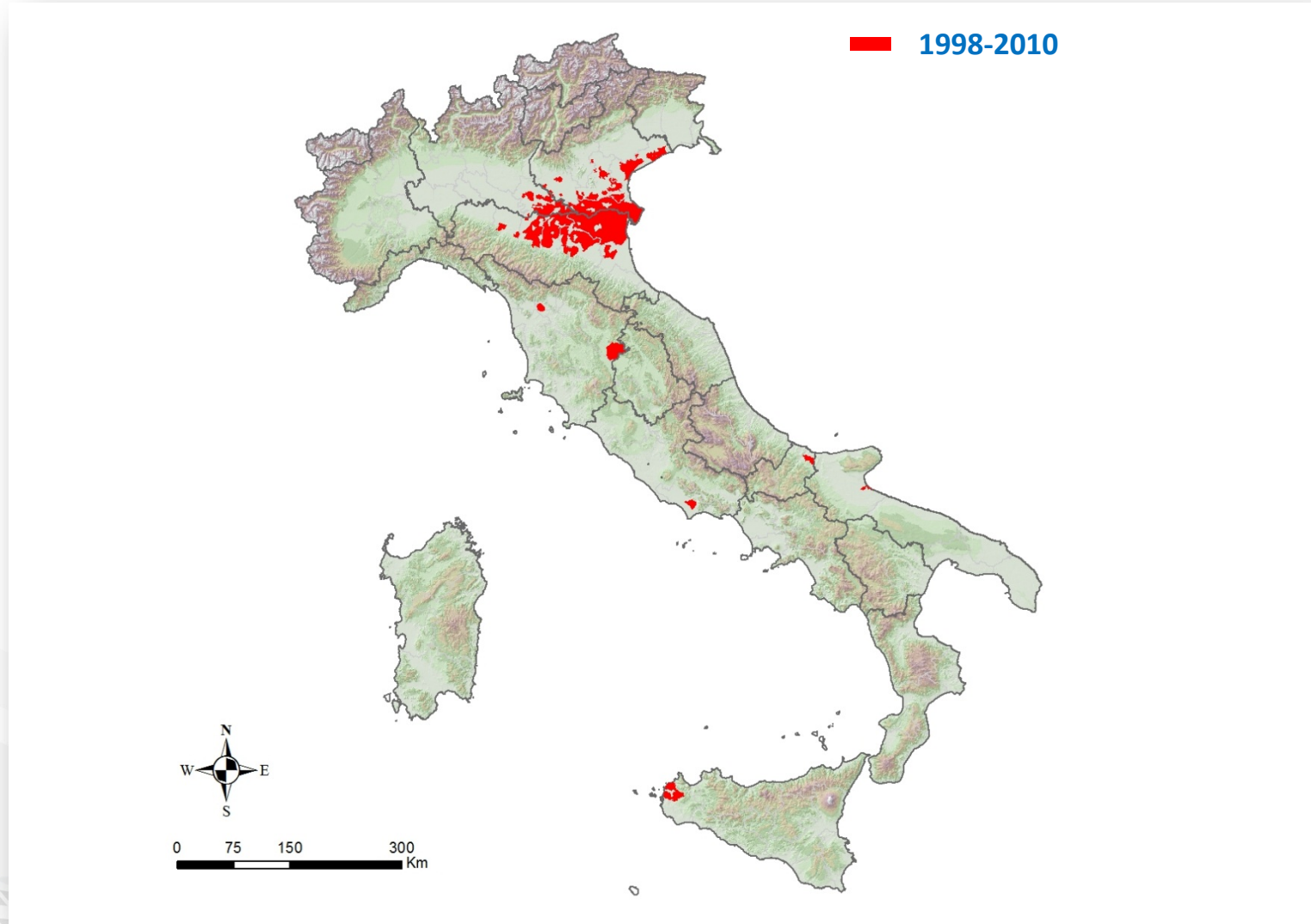
Circolazione WNV in Italia 1998 - 2014



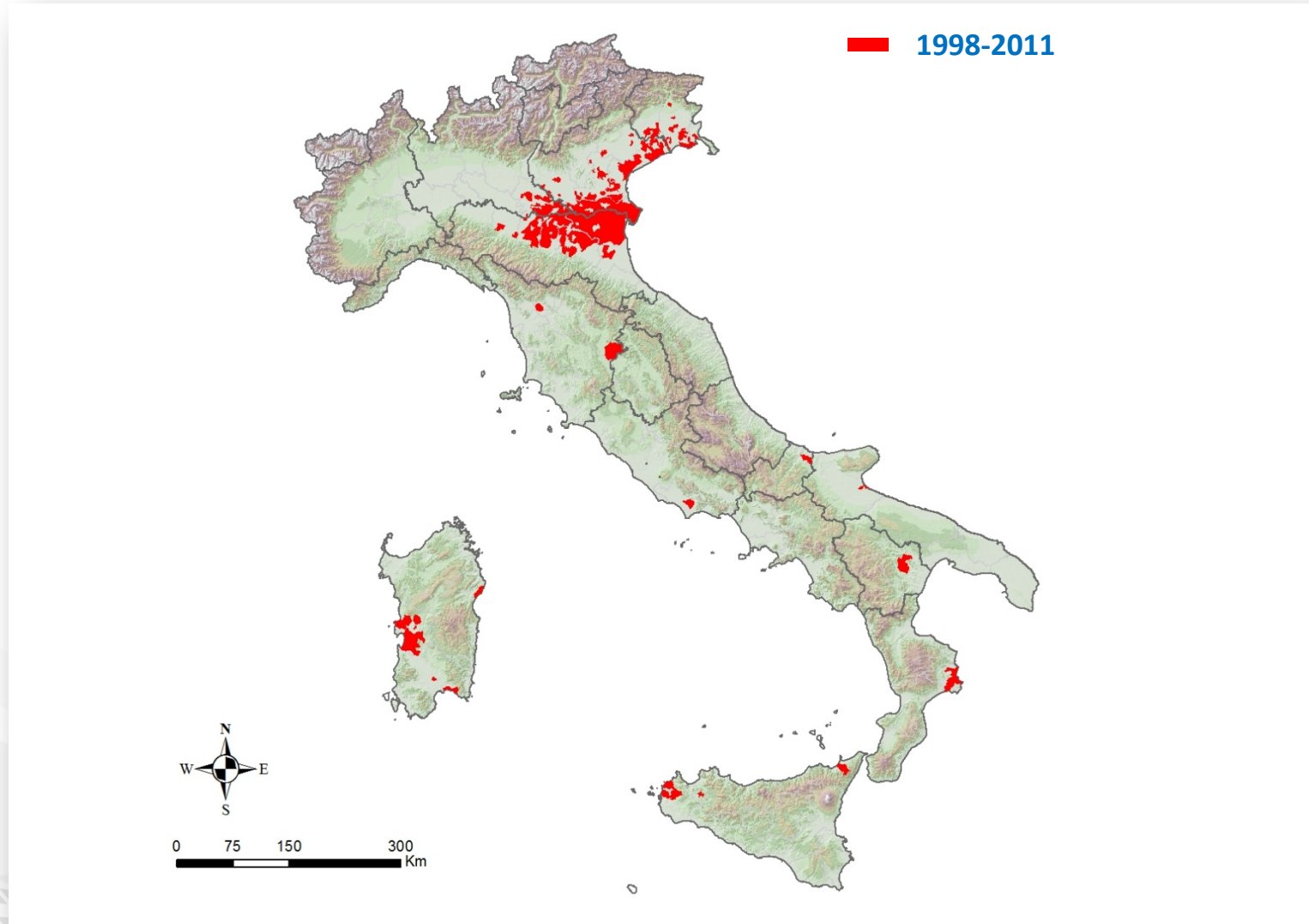
Circolazione WNV in Italia 1998 - 2014



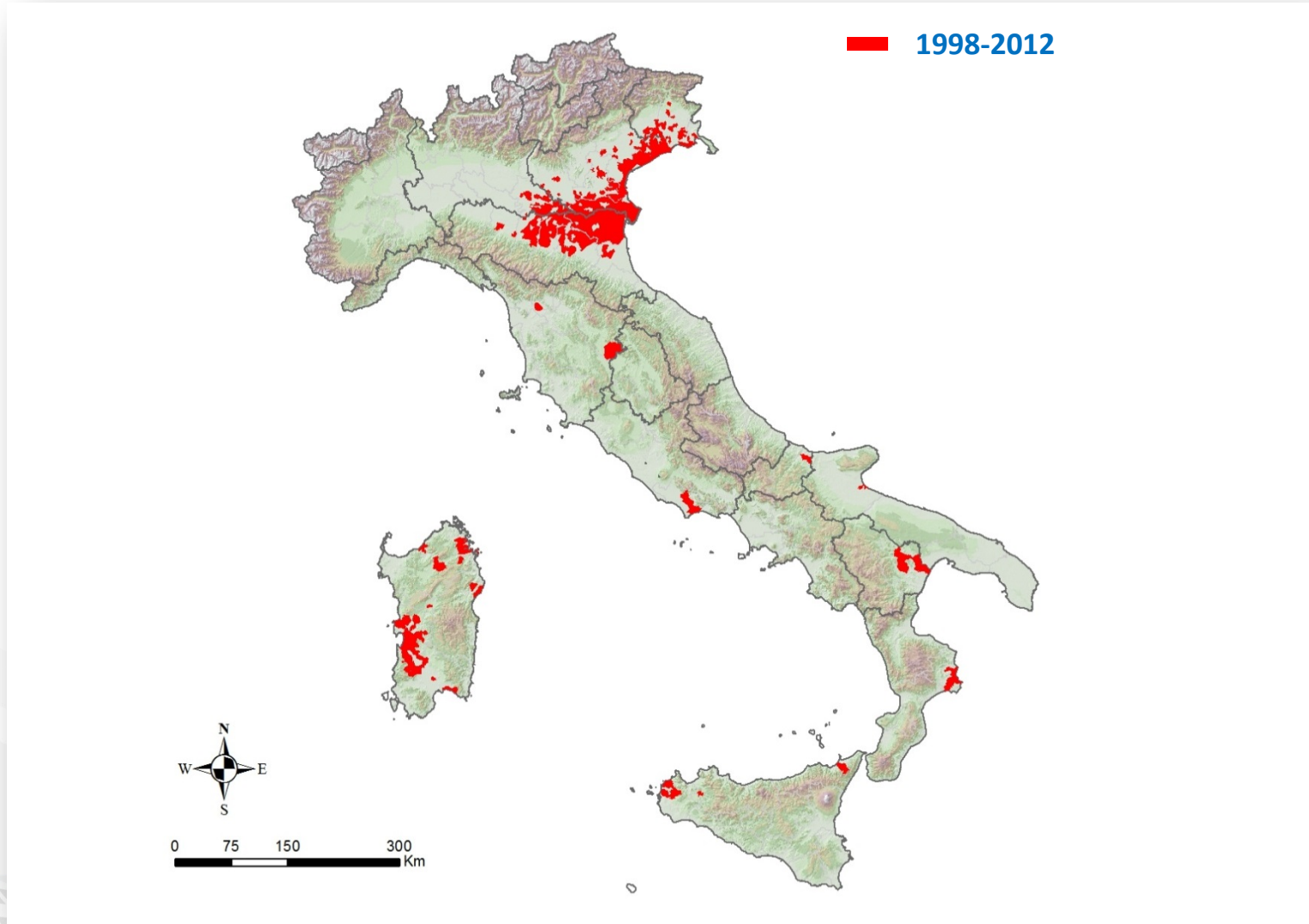
Circolazione WNV in Italia 1998 - 2014



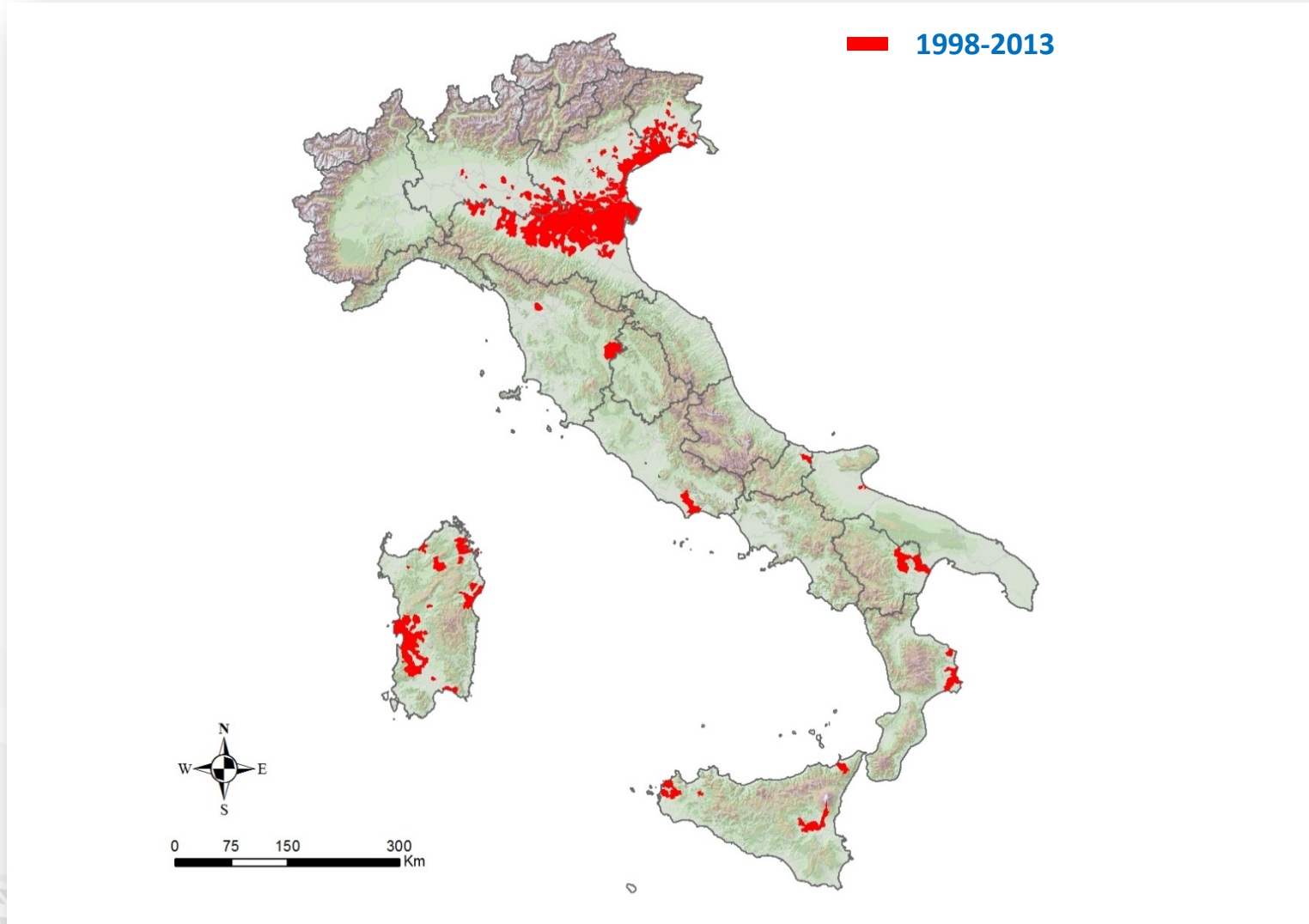
Circolazione WNV in Italia 1998 - 2014



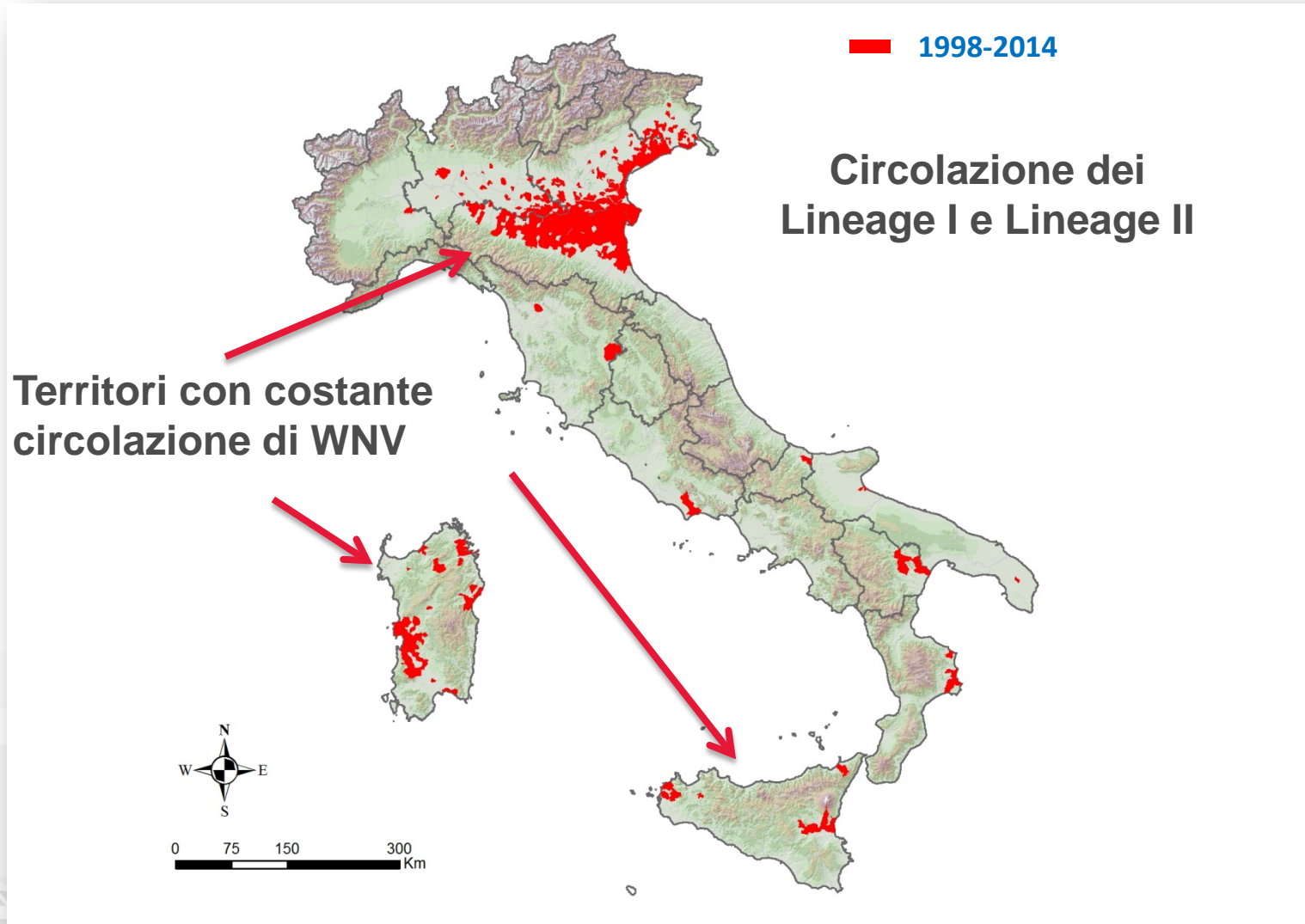
Circolazione WNV in Italia 1998 - 2014



Circolazione WNV in Italia 1998 - 2014



Circolazione WNV in Italia 1998 - 2014



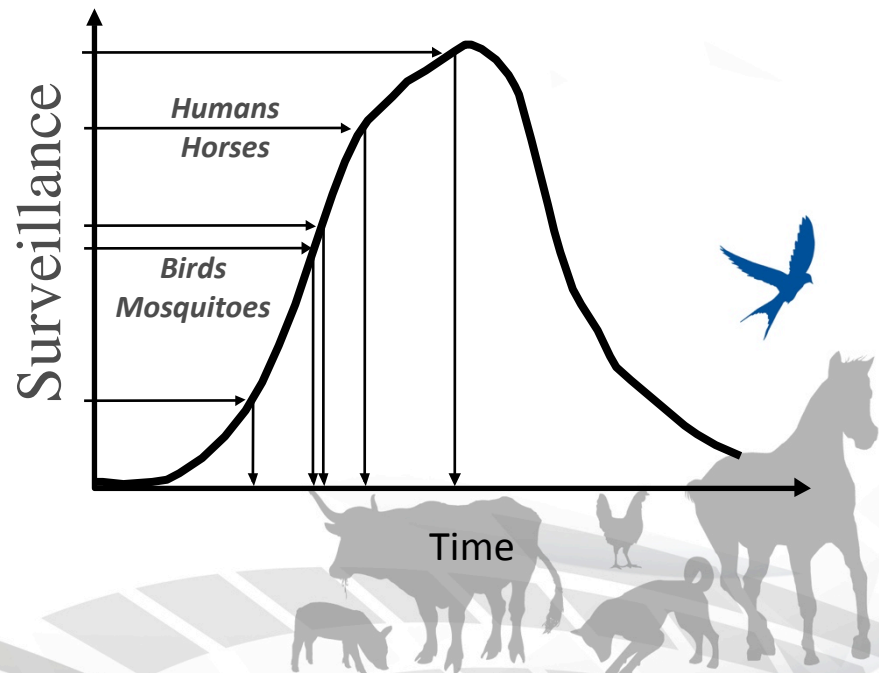
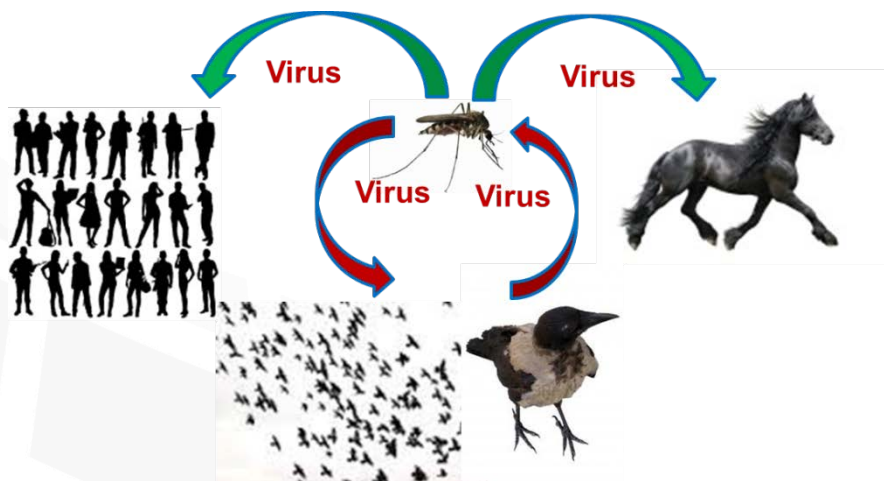
Il Piano Nazionale di Sorveglianza WND

- ✓ In seguito al riscontro di circolazione virale nel 2008 le attività di **sorveglianza veterinaria** nazionali sono state **integrate** e annualmente **aggiornate** in base all'evoluzione della situazione epidemiologica, è stato quindi emanato il **Piano nazionale di sorveglianza.**



Il Piano Nazionale di Sorveglianza WND

Il principale scopo della sorveglianza veterinaria è quello di individuare precocemente la circolazione del virus per fornire informazioni utili e tempestive ai servizi di Salute Pubblica



Il Piano Nazionale di Sorveglianza WND 2014-2015

- **AREE ENDEMICHE**

Le aree geografiche coinvolte dalla circolazione virale negli ultimi 2 anni

- **RESTO DEL TERRITORIO**



Il Piano Nazionale di Sorveglianza WND 2014-2015

1. Sorveglianza su **uccelli stanziali** di specie target (gazze, cornacchie, ecc.) o in allevamenti rurali di pollame (animali < 6 mesi di età o animali sentinella) in **AREE ENDEMICHE**



2. Sorveglianza entomologica in **AREE ENDEMICHE**



3. Sorveglianza negli **equidi**:
- sierologica (IgM) su campioni prelevati random in **TUTTA ITALIA**
 - Passiva** in **TUTTA ITALIA**



Il Piano Nazionale di Sorveglianza WND 2014-2015


- 
4. sorveglianza sulla mortalità degli **uccelli selvatici**,

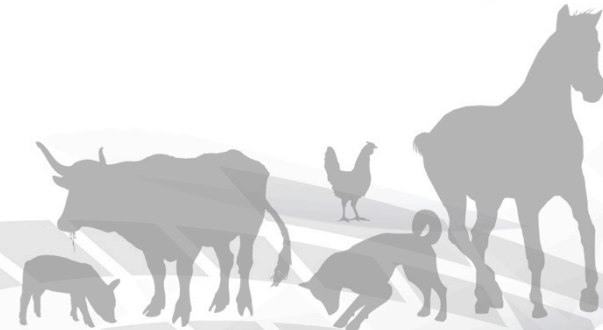


- 
5. sorveglianza dell'**avifauna selvatica** di specie migratorie.



Il Piano Nazionale di Sorveglianza WND come allerta rapido

- 
- ✓ Grazie alle attività di **sorveglianza** realizzate dai **servizi veterinari**, sono stati identificati precocemente i **territori in cui circola il virus**.
 - ✓ Questo **allerta rapido** é stato utilizzato per la tutela della **salute pubblica** facilitando la predisposizione di **azioni preventive** nelle aree interessate dal West Nile Virus.



Flussi dati



Dati sui
casi umani

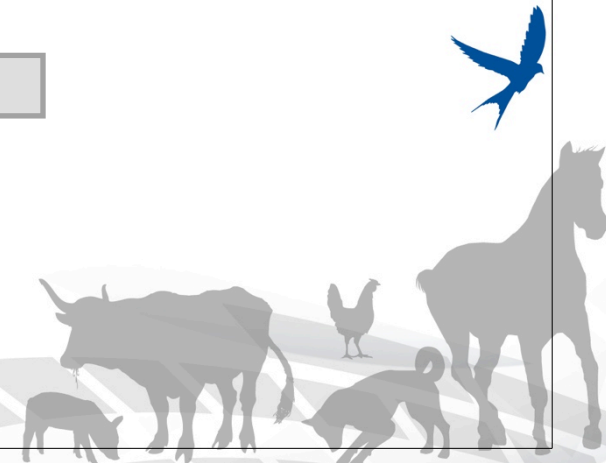


Dati sui casi veterinari



Feed-back relativi ai dati sui casi umani

Evidenze di circolazione virale



Disseminazione risultati

Epidemiological report
WIND
4th October 2014, n. 10

West Nile Disease in Italy in 2014



Introduction

WIND surveillance is based on the following components:

1. surveillance of equine herds of equine species. This (over 100) of the planned activities are performed, surveillance can alternatively be conducted on rural or urban areas starting with or by positioning groups of sentinel chickens.
2. human surveillance.
3. serological surveillance.
4. and/or entomological surveillance.

Two different epidemiological areas have been identified for 2014 (Fig. 1):

A. Endemic areas. The areas where WNV is considered as endemic in the previous years, as well as surrounding areas:

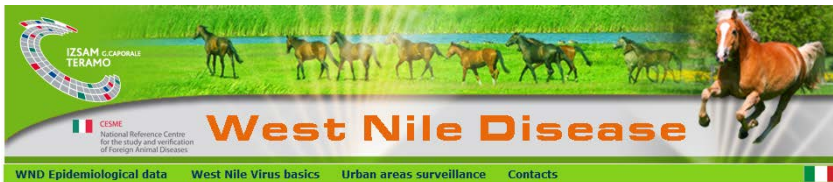
- Maremma area already affected by the circulation of WNV in the past.
- Island Sardinia and Sicily.

B. The remaining national territory.

The surveillance activities to be performed have been adapted to the different epidemiological situations in order to monitor the circulation of the virus in the endemic areas and to verify the introduction of the virus in the remaining national territory.



Figure 1. West Nile Disease surveillance area.



IZSAM G. CAPORALE TERAMO

CSME National Reference Centre for the study and verification of Foreign Animal Diseases

West Nile Disease

WND Epidemiological data | West Nile Virus basics | Urban areas surveillance | Contacts

West Nile Disease (WND) epidemiological bulletins

Epidemiological data

WND in Italy

- 2013
- 2012
- 2011
- 2010
- 2009
- 2008

WND in Mediterranean Basin

- 2013
- 2012
- 2011
- 2010

WND IN ITALY 2014 Report

WND in Italy in 2014
9 October 2014



WND IN EUROPE AND IN MEDITERRANEAN BASIN 2014 Report

WND in Europe and in Mediterranean Basin - 2014
2 October 2014



VIDEO

WND clinical signs - horse



PHOTO GALLERY

- Cachexia
- Depression
- Mosquito traps



National Reference Centre for the study and verification of Foreign Animal Diseases (CESME)
Istituto Zooprofilattico Sperimentale dell'Abruzzo e del Molise "G. Caporale" - Campo Boario - 64100 TERAMO (ITALY)
Tel. +39-0861.3321 Fax +39-0861.332251

Epidemiological Report

WEST NILE DISEASE IN EUROPE AND IN MEDITERRANEAN BASIN In 2014



Epidemiological Report - October 2nd, 2014 - no 11

On October 2nd, 2014, West Nile Disease human and equine cases have been reported in Bosnia Herzegovina, Greece, Russian Federation, Serbia, Croatia, Austria, Italy, Romania, Israel, Hungary, Spain and Turkey.

| COUNTRY | WIND | NO. OF CASES | NO. OF DEATHS |
|--------------------|------|--------------|---------------|
| Algeria | 1 | 1 | 0 |
| Austria | 1 | 1 | 0 |
| Bosnia Herzegovina | 1 | 1 | 0 |
| Croatia | 1 | 1 | 0 |
| Greece | 1 | 1 | 0 |
| Hungary | 1 | 1 | 0 |
| Italy | 1 | 1 | 0 |
| Romania | 1 | 1 | 0 |
| Russian Federation | 1 | 1 | 0 |
| Serbia | 1 | 1 | 0 |
| Spain | 1 | 1 | 0 |
| Turkey | 1 | 1 | 0 |
| Ukraine | 1 | 1 | 0 |

Table 1. Number of cases (confirmed and probable) of West Nile Disease in Europe and in Mediterranean Basin.

1. For EU countries, probable and confirmed cases, as per EU case definition.
2. For EU countries, confirmed cases, as per EU case definition.
For EU countries, health authorities: <http://www.ecdc.europa.eu/en/wnd/>



Figure 1. Geographic distribution of cases (confirmed and probable) of West Nile Disease in Europe and in Mediterranean Basin.




WEST NILE DISEASE

GIUGNO 2012

Ministero della Salute

ISTITUTO G. CAPORALE